

# Remote Connection to TAMU Network and Using Software (Cadence) and Computing Resources

There are a couple of ways to connect to the university networks and use computing resources. Here, I have shown 2 common methods, with method 1 being the easiest way.

For any method, the users will be required to use Duo NetID Two-Factor Authentication. Enroll now at <https://duo.tamu.edu>

## Method 1:

1- Use the following link to download TAMU VPN tool:

[https://connect.tamu.edu/+CSCOE+/logon.html#form\\_title\\_text](https://connect.tamu.edu/+CSCOE+/logon.html#form_title_text)



Texas A&M SSL VPN Service  
DIVISION OF INFORMATION TECHNOLOGY

Starting October 1, 2018, VPN users will be required to use Duo NetID Two-Factor Authentication. Enroll now at <https://duo.tamu.edu>.

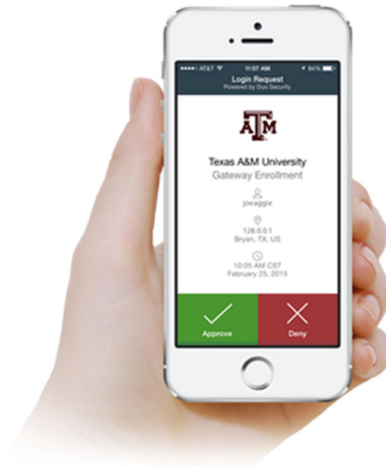
## Log In

Group:

NetID:

Password:

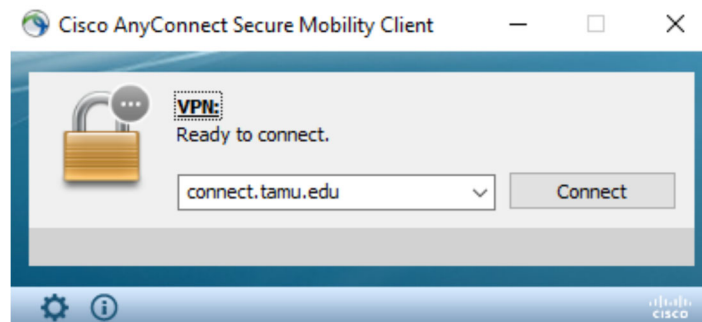
2- Login with your NetID and Password. You will be asked to verify your login using the two-factor authentication.



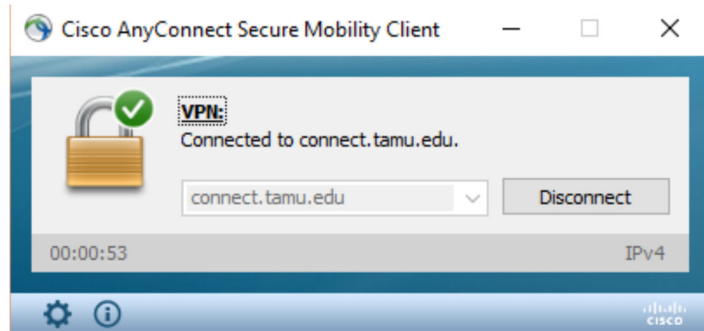
3- Download Cisco AnyConnect VPN software.



4- Use Cisco AnyConnect VPN to connect to tamu network using your NetID and password. You will again be asked to authenticate using the two-step authentication process.



5- Now you are connected to the university network.



6- Use an SSH client which supports X11 forwarding to connect to university Linux servers:

olympus.ece.tamu.edu

You can use Putty (a free SSH client which) along with Xming (a free software for X11 forwarding) to connect to these servers. Other commonly used software is MobaXterm.

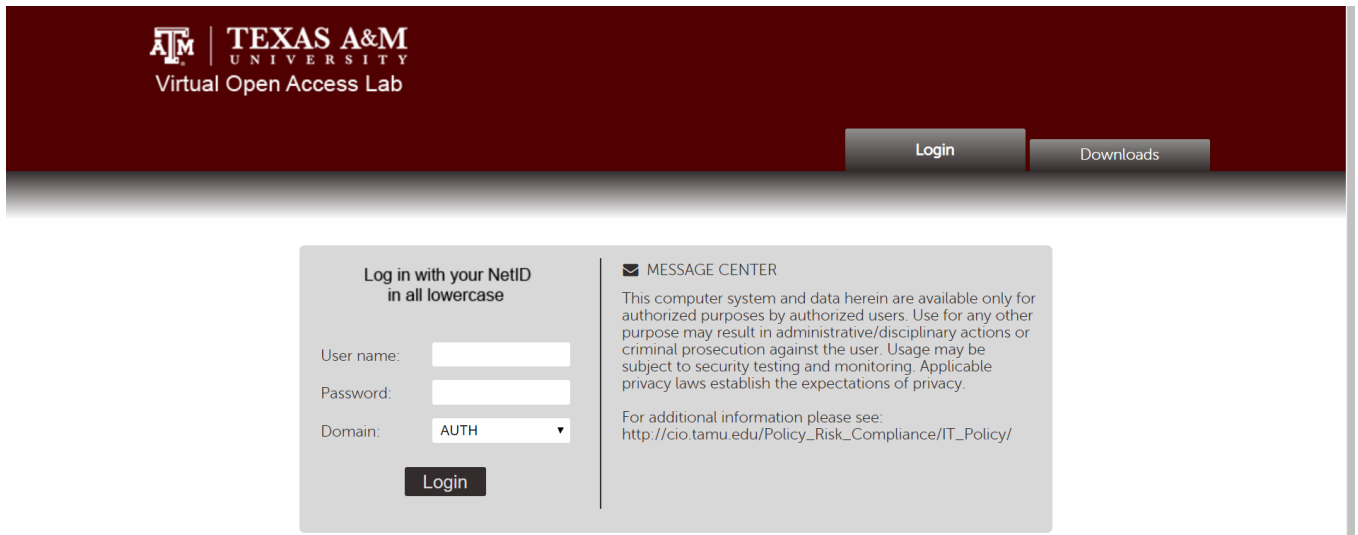
7- After connecting to university server via SSH, you can use the following commands to create a folder for cadence, copying model files and opening the cadence. Note that you only need to do these steps once and later you can simply go to your cadence folder and open cadence.

- load-ecen-720
- mkdir ECEN720 (create ECEN720 folder)
- cd ECEN720 (go to ECEN720 folder)
- cp -rf /mnt/lab\_files/ECEN689\_605/model . (copy model files for transistors to your folder)
- cp -rf /mnt/lab\_files/ECEN689\_605/cds.lib .
- cp -rf /mnt/lab\_files/ECEN689\_605/ncsu .
- ./ncsu (Run Cadence)

## Method 2:

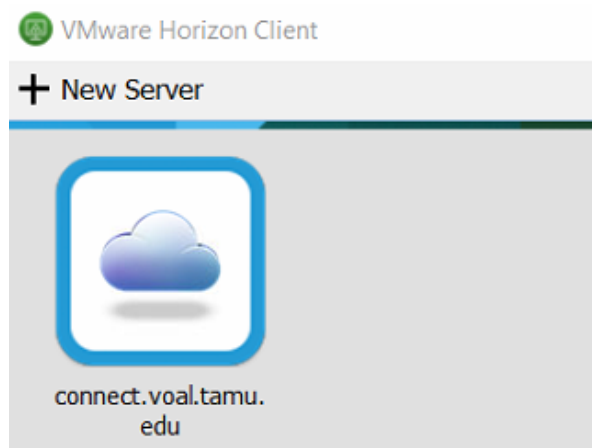
1- Use the following link to connect to TAMU virtual open access lab website:

<https://voal.tamu.edu>

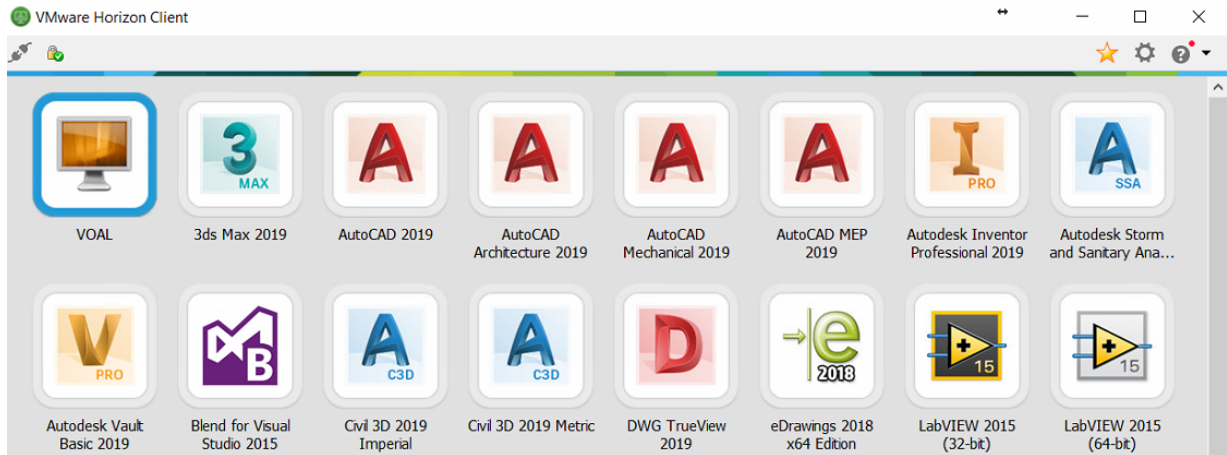


2- Login with your NetID and Password and follow instructions to download and install required software (VMware Horizon Client)

3- Connect to the VOAL server (connect.tamu.edu). You will be asked to authenticate using the two-step authentication process.



4- You should be able to connect to a virtual machine by clicking VOAL icon.



- 5- All required software (Xming and Putty or MobaXterm) are available on the virtual machine. Run MobaXterm or (Xming and then use putty) to connect to Linux servers:

olympus.ece.tamu.edu

You can use Putty (a free SSH client which) along with Xming (a free software for X11 forwarding) to connect to these servers. Other commonly used software is MobaXterm.

- 6- After connecting to university server via SSH, you can use the following commands to create a folder for cadence, copying model files and opening the cadence. Note that you only need to do these steps once and later you can simply go to your cadence folder and open cadence.

- load-ecen-720
- mkdir ECEN720 (create ECEN720 folder)
- cd ECEN720 (go to ECEN720 folder)
- cp -rf /mnt/lab\_files/ECEN689\_605/model . (copy model files for transistors to your folder)
- cp -rf /mnt/lab\_files/ECEN689\_605/cds.lib .
- cp -rf /mnt/lab\_files/ECEN689\_605/ncsu .
- ./ncsu (Run Cadence)